

> Services available

1 Primary ISMS (daily input):

- A 24/7 with double staff and waking night cover.
- B 24/7 with double staff and sleepover cover.
- C 24/7 with single staff and sleepover cover.

2 Secondary ISMS:

- A Single or double staffing to a maximum of 112 hours per week (up to 16 hours per day).
- B Single or double staffing to a maximum of 84 hours per week (up to 12 hours per day).
- C Single or double staffing to a maximum of 49 hours per week (up to seven hours per day).

3 ISMS Tailored Service

- A Single or double staff input of more than 30 hours but not exceeding 48 hours per week.
- B Single or double staff input of more than 16 hours but not exceeding 30 hours per week.
- C Single or double staff input of up to 15 hours per week.

If you would like a translated version of this leaflet, please phone 0131 624 7270 or e-mail info@national.sacro.org.uk quoting reference NAT/381.

This leaflet is also available in large print or Braille.

In order to make Sacro's services as widely available as possible, we have made every reasonable effort to facilitate easy access to all of our premises for disabled service users. Where this is not possible, we will arrange a suitable, alternative venue.

Ma tha sibh ag iarraidh leth-bhreas eadar-theangaichte den bhileag seo cuiribh fòn gu 0131 624 7270 no post-dealain gu info@national.sacro.org.uk a' cleachdadh NAT/381.

Bu broşürün çevirisini istiyorsanız, lütfen 0131 624 7270'ı telefonla arayın veya info@national.sacro.org.uk eposta gönderip NAT/381 dosya numarasını söyleyin.

اگر آپ کو اس کتابچہ کا ترجمہ درکار ہے تو براہ کرم 0131 624 7270 پر ٹیلیفون کریں یا info@national.sacro.org.uk پر ای میل بھیجیں اور ریفرنس نمبر NAT/381 کا حوالہ دیں۔

欲索取這單張的翻譯版本，請電 0131 624 7270，或電郵 info@national.sacro.org.uk，並說明檔案編號 NAT/381。

إذا كنت تريد نسخة مترجمة من هذه المنشورة الرجاء الاتصال برقم الهاتف 0131 624 7270 أو أرسل بريداً إلكترونياً إلى العنوان info@national.sacro.org.uk وذكر الإشارة رقم NAT/381

এই পুস্তিকার অনুবাদ যদি আপনি পেতে চান তাহলে 0131 624 7270 নম্বরে ফোন করে অথবা ই-মেইল করে রেফারেন্স নম্বর NAT/381 উল্লেখ করবেন

Jeśli potrzebne jest tłumaczenie w polskiej wersji językowej, bardzo prosimy o kontakt pod numerem 0131 624 7270 lub drogą e-mailową info@national.sacro.org.uk podając numer referencyjny NAT/381.

If you are uncertain about anything you have read in this leaflet or require further information, please do not hesitate to get in touch with the Service at:

Sacro National Office

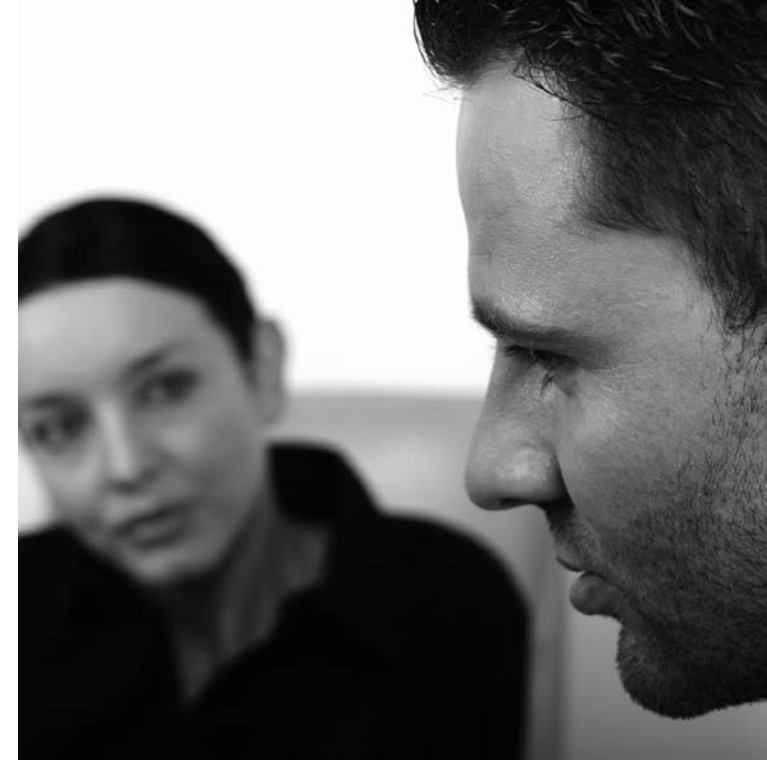
29 Albany Street, Edinburgh EH1 3QN

Tel: 0131 624 7270

Fax: 0131 624 7269

Email: isms@national.sacro.org.uk

Web: www.sacro.org.uk





SAFEGUARDING COMMUNITIES – REDUCING OFFENDING

INTENSIVE SUPPORT &
MONITORING SERVICES

Sacro's Intensive Support and Monitoring Service (ISMS) is an individualised service which aims to provide high levels of support and monitoring for offenders assessed as being at very high risk of re-offending and/or harm.

> What does the service offer?

ISMS's are essentially designed around the individual support needs of the prospective service user and funder/stakeholder requirements.

The service provides support and monitoring within properties identified, and usually supplied by the relevant local authority.

Given the high profile nature of some of the service users, they are, on occasion located within different geographical area from the commission of the offence(s) and/or victims.

> Who is the service for?

Service users for ISMS will all be on some form of post-custodial licence and may well be deemed under the MAPPA to be one of the "Critical Cases".

Other routes of suitable referral to Sacro's ISMS may include service users who require an intensive support package when returning to the community from state hospitals or other similar institutions.

> How does the service work?

ISMS can provide up to 24hrs per day, 7 days per week support and monitoring for the individual. It is assessed and agreed in accordance to MAPPA requirements.

A typical service will operate with a one-to-one or two-to-one staff/client ratio (depending on risk assessments) and then reduce monitoring and support over a period of time when instructed to do so by the MAPPA or local authority.

Sacro's intervention will include ongoing feedback to the local authority on how the service user is responding to the service and information/assessment in relation to the perceived risk the service user poses to and within the community.

> What are the elements of the service?

Accommodation: Furnished flat to house service user and Sacro staff.

Monitoring: Monitor client for up to 24 hours per day, carry out spot checks and report breaches of agreements in place.

Supervision: Manage planned arrangements to oversee offender in community to reduce risk.

Support: Provide an individual tailored support package meeting the needs of the service user.

> How is the service accessed?

Referrals are made to Sacro by the local authority Criminal Justice Services.

> Aims:

- > To work in partnership with local authorities, the police and other agencies to assist with effective management of sex offenders and high risk offenders.
- > To contribute to community safety by providing a service that will reduce the risk of high risk offenders re-offending.

> Objectives:

The Service will assist Social Work departments in their management of these types of offenders through:

- > Individual accommodation that restricts risk to the community as far as possible, affords the offender freedom from harassment and facilitates intensive monitoring and supervision.
- > Intensive monitoring of the offender for up to 24 hours per day.
- > Intensive support for the offender to assist his resettlement in the community.
- > Coordinate the offender's daily programme through liaison with other agencies e.g. employment training, health services, and the police.
- > Contribute to the continuous risk assessment through provision of information about lifestyle, movements, relationships and behaviour.
- > Contribute to supervision by challenging inappropriate behaviour and sharing of information with supervising social workers and the police.
- > Planning longer-term accommodation in conjunction with the local authority.